



FREE GUIDED FACTORY AND MODEL VILLAGE TOURS

Head on over for a free, personalized model tour, and one of our knowledgeable housing consultants will answer any questions you may have.



HOMES ARE GOING FAST!

Come see our newest homes and get
Factory Direct Pricing!

800.581.5380

6855 West 700 South
Topeka, IN 46571

ManufacturedHomesFactory.com

FACTORY DIRECT PRICING



800.581.5380

6855 West 700 South
Topeka, IN 46571



SCAN ME

Check out our
latest promotions!

ManufacturedHomesFactory.com



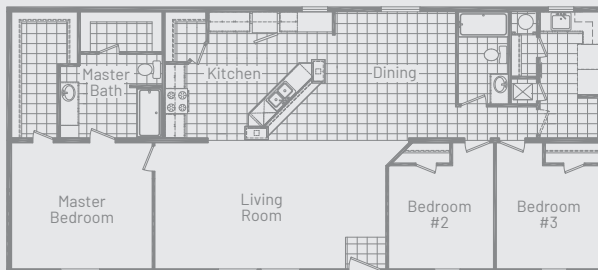
Your Beautiful New Home IS WAITING

START YOUR HOME JOURNEY

CHAMPION®
HOMES CENTER

- All homes are sold factory direct, saving our home buyers money
- Wide variety
- Over 18,000 happy homebuyers
- Free factory and model village tours daily
- Specializes in custom orders
- Famous for running HUGE sales & promotions
- Furnished model villages at every sales center
- Convenient, complimentary hotel rooms for customers

POPULAR MODEL



OUR DOGWOOD FLOOR PLAN

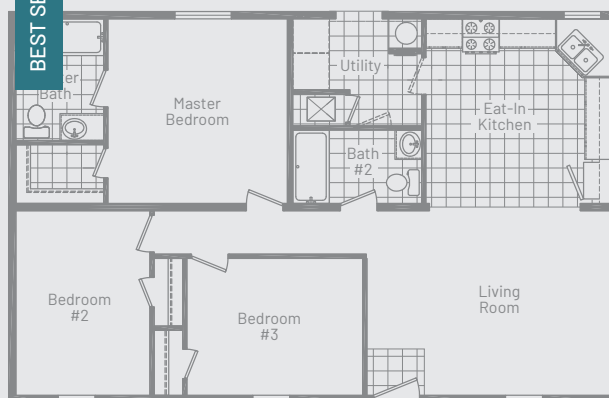
OUR TEAM OF PROFESSIONALS ARE READY TO ASSIST YOU!

LOW PRESSURE.
EXPERT ADVICE.

Champion Homes Center in Topeka, IN, is your source for new homes directly from the factory. We deliver homes to **Indiana, Illinois, Michigan, Ohio, Kentucky, Minnesota, Iowa, Missouri, & Wisconsin.**



BEST SELLER



OUR ST. JOHN FLOOR PLAN

FAMILY-OWNED AND
OPERATED FOR OVER
20 YEARS

*Source: Federal Housing Finance Agency Q2 2018 Home Price Index
Floor plans subject to change

CHAMPION[®] HOME BUILDERS

THE CHAMPION HOME BUILDERS PROMISE



PRODUCTION

The unsurpassed quality of every Champion home is possible thanks to innovative manufacturing processes and a commitment to outstanding design.



MATERIAL

Each unit is created in an environmentally controlled, state-of-the-art facility by skilled artisans, using only the finest materials.



QUALITY CONTROL

This setting allows for a precise assembly system. One that achieves strict efficiency and exacting quality control standards, resulting in remarkably crafted homes.

STYLISH HOME, ATTAINABLE PRICE



SAME INVESTMENT AS TRADITIONAL HOMES

Manufactured homes appreciate at nearly the same rate as site-built homes.*



BUILT TO LAST

Quality construction according to federally mandated building code and inspections.



SPEEDY CONSTRUCTION

Homes are made efficiently with production lines, robotics, and indoor production, taking weather out of the equation.



LESS WASTE = BETTER FOR THE ENVIRONMENT

Factory-built houses utilize excess construction materials in other homes.



ALWAYS AFFORDABLE

Quality materials are purchased in bulk, passing the savings on to you!