

# Crown Pointe

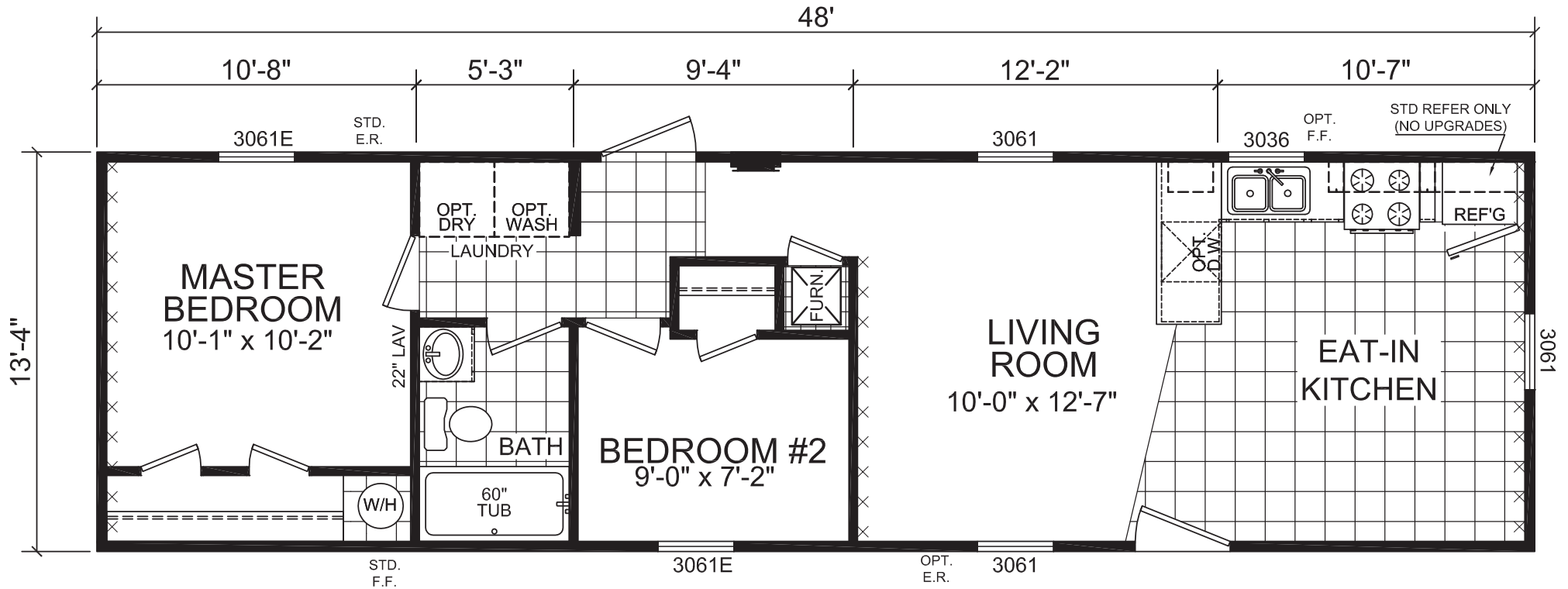
Gold Star Single Section Series



**Factory Expo**  
"Factory Direct Pricing" HOME CENTERS

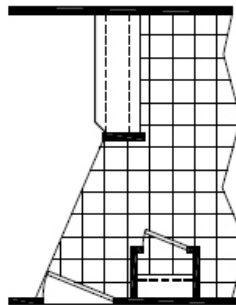
**2 Bedroom, 1 Bath**  
**Approx. 643 Sq. Ft.**

Last Updated: 1-8-18



**REQUIRES 2x6 Ext WALLS**

OPTIONAL BAR



OPT CLOSET  
OR PANTRY

I authorize Factory Expo to build my house, per this plan.

X \_\_\_\_\_

Customer Signature/Date



Factory Expo Home Centers  
6855 West 700 South  
Topeka, Indiana 46571

**1-800-581-5380**    [www.FactoryDirectMobileHomes.com](http://www.FactoryDirectMobileHomes.com)    **1-800-581-5380**    [www.FactoryDirectMobileHomes.com](http://www.FactoryDirectMobileHomes.com)

Important: Due to our policy of constant improvement, all information in our brochures may vary from actual home. The right is reserved to make changes at any time, without notice or obligation, in colors, materials, specifications, processes, and models. All dimensions and square footage calculations are nominal and approximate figures. Please check with your sales person for specific and current information.