

# Bushnell

Gold Star Multi-Section Series

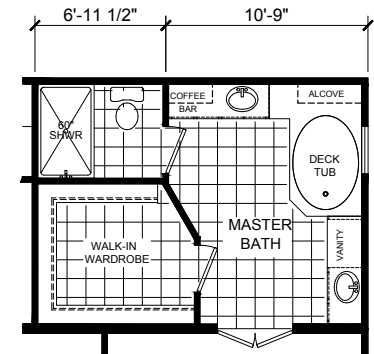
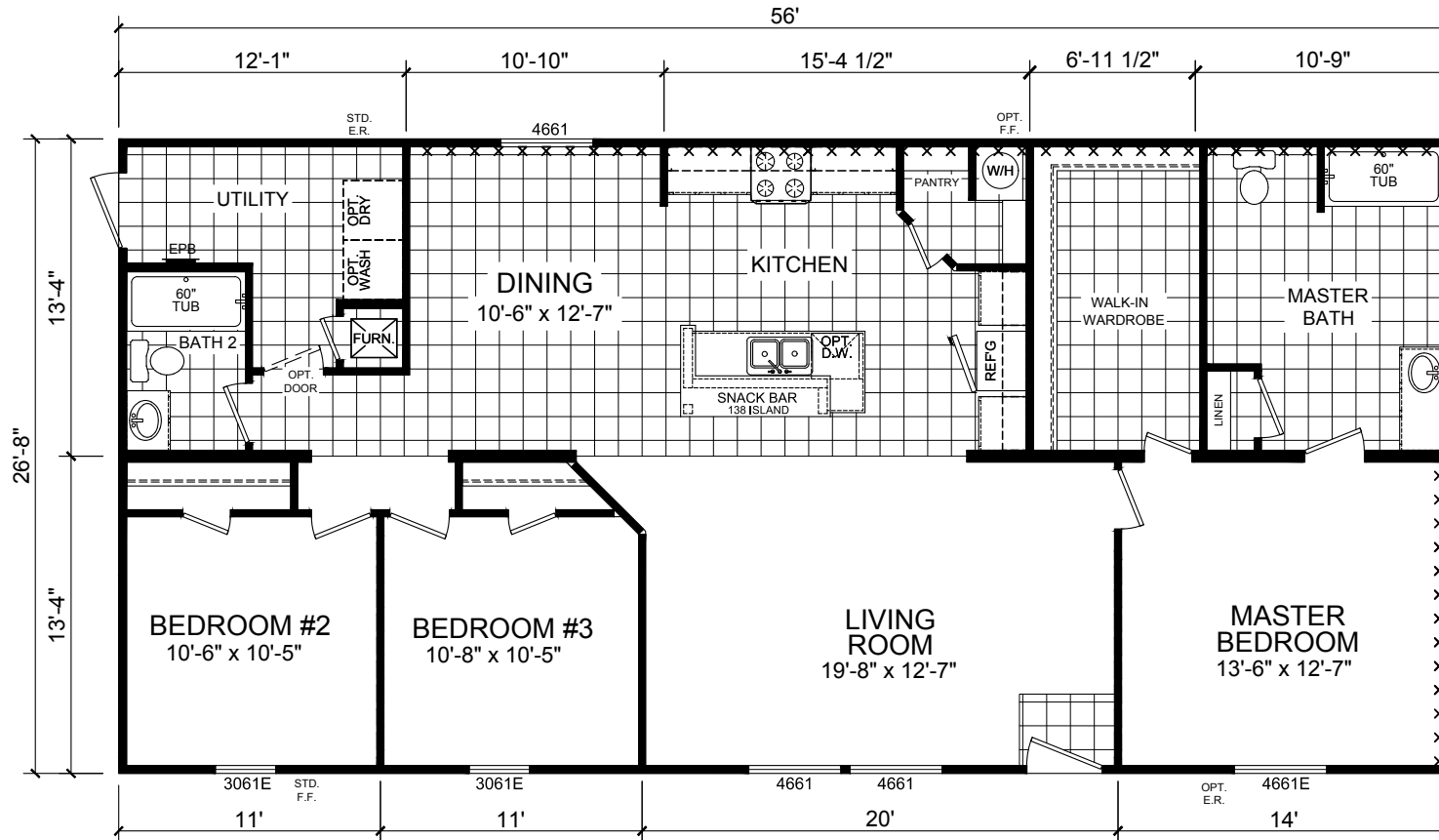


# Factory Expo

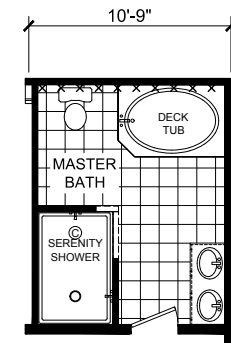
"Factory Direct Pricing" HOME CENTERS

3 Bedroom, 2 Bath  
Approx. 1,500 Sq. Ft.

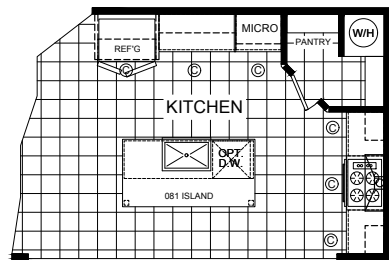
Last Updated: 12-4-19



OPTIONAL MASTER BATH



OPTIONAL SERENITY BATH



OPTIONAL ULTIMATE KITCHEN 2



Factory Expo Home Centers  
6855 West 700 South  
Topeka, Indiana 46571

I authorize Factory Expo to build my house, per this plan.  
X \_\_\_\_\_  
Customer Signature/Date

1-800-581-5380 www.FactoryDirectMobileHomes.com 1-800-581-5380 www.FactoryDirectMobileHomes.com

Important: Due to our policy of constant improvement, all information in our brochures may vary from actual home. The right is reserved to make changes at any time, without notice or obligation, in colors, materials, specifications, processes, and models. All dimensions and square footage calculations are nominal and approximate figures. Please check with your sales person for specific and current information.